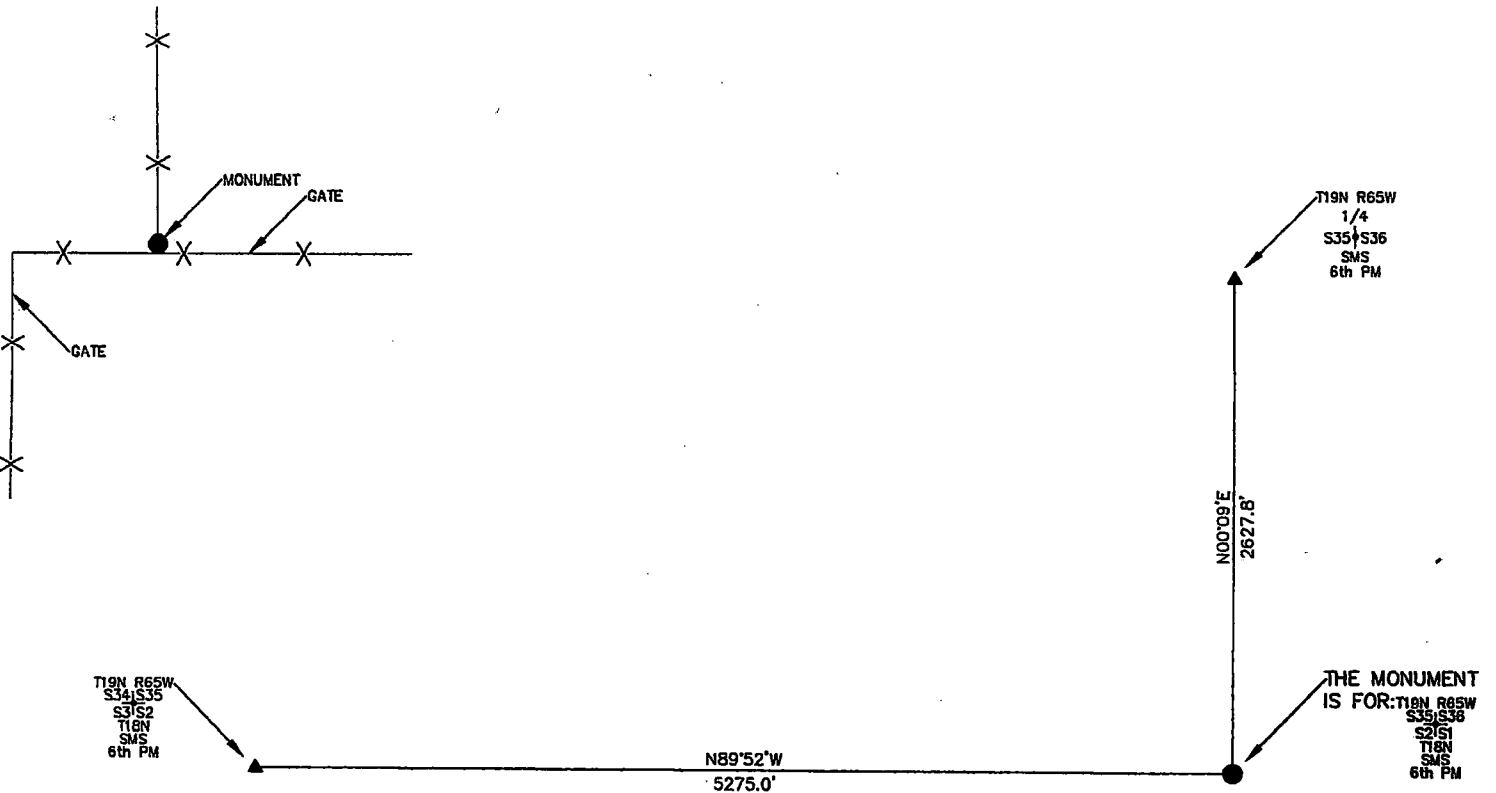


# State of Wyoming Corner Record

(In compliance with the CORNER PERPETUATION AND FILING ACT, Wyoming Statutes, 2013 Section 33-29-901 through 33-29-910, and the Rules and Regulations of the Board of Professional Engineers and Professional Land Surveyors)

Reverse side of this form may be used if more space is needed.

Record of original survey and citation of source of historic information (if corner is lost or obliterated). Description of corner monumentation evidence found and/or monument and accessories established to perpetuate the location of this corner. Sketch of relative location of monument, accessories, and reference points with course and distance to adjacent corner(s) (if determined in this survey). Method and rationale for reestablishment of lost or obliterated corner.



**NOTE:**  
LINES SHOWN ARE BETWEEN MONUMENTS AND MAY OR MAY NOT BE SECTION OR SECTION SUBDIVISION LINES.

**FOUND THE MONUMENT FOR THIS CORNER COMMON TO 4 SECTIONS WHICH IS A SET MARKED STONE MEASURING 10" NORTH AND SOUTH X 11" EAST AND WEST X 12" TALL IN A NORTH AND SOUTH RUNNING FENCE LINE WITH A NORTH, EAST, AND WEST RUNNING FENCE CORNER SOUTH OF THE MONUMENT AND AN EAST AND SOUTH RUNNING FENCE CORNER WESTERLY OF THE MONUMENT.**

THE MONUMENT FOR THIS CORNER COMMON TO 4 SECTIONS WHICH IS A SET MARKED STONE MEASURING 10" NORTH AND SOUTH X 11" EAST AND WEST X 12" TALL IN A NORTH AND SOUTH RUNNING FENCE LINE WITH A NORTH, EAST, AND WEST RUNNING FENCE CORNER SOUTH OF THE MONUMENT AND AN EAST AND SOUTH RUNNING FENCE CORNER WESTERLY OF THE MONUMENT.

**CORNER MONUMENT SYMBOLS**

- RECORD IS FOR THIS CORNER MONUMENT.
- ▲ A RELATED CORNER OR WC MONUMENT.

SCALE 1"=1000'  
 (EXCEPT IN TRIVIAL CASES)  
 BEARINGS ARE RELATED TO WGS 84 WITH GPS OBSERVATIONS  
 DRAWN BY: D.C.  
 12/17/19  
 P.C. M. PIERCE

**Marking on the Stone**

Date of Field Work: 11/17/19 Office Reference: \_\_\_\_\_

**CROSS INDEX DIAGRAM**

A	1	2	3	4	5	6	7	8	9	10	11	12	13	14	15	16	17	18	19	20	21	22	23	24	25
B																									
C		6				5					4														
D																									
E																									
F																									
G			7				8					9													
H																									
J																									
K																									
L																									
M																									
N																									
O																									
P																									
Q																									
R																									
S																									
T																									
U																									
V																									
W																									
X																									
Y																									
Z	1	2	3	4	5	6	7	8	9	10	11	12	13	14	15	16	17	18	19	20	21	22	23	24	25

Firm/Agency, Address

UELS, LLC  
3313 35TH Avenue  
Suite B  
Evans, Co 80620  
 Telephone Number: 970-506-1544

This corner record was prepared by me or under my direction and supervision.

**SEAL & SIGNATURE**



RECP #: 772854

RECORDED 3/2/2020 AT 4:16 PM BK# 2661 PG# 2006  
 Debra K. Lee, CLERK OF LARAMIE COUNTY, WY PAGE 1 OF 1